

Quality of local surgical guidelines and written patient information

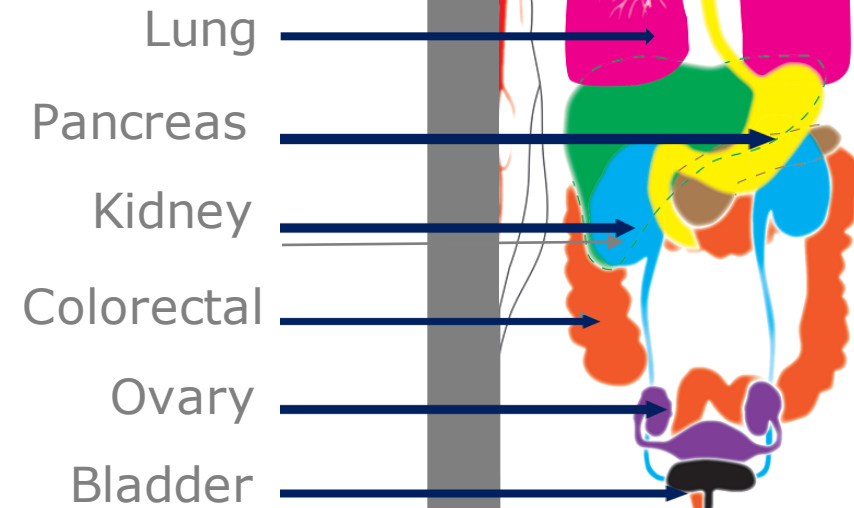
- A nationwide patient safety study

Lotte Linnemann Rønfeldt
The Danish Cancer Society
NSQH 31.8.2018



Aim of the study

The quality of local CPGs and PILs
in Danish cancer surgery?



Background

CPGs (Clinical Practice Guideline) supports quality and safety in postoperative recovery

- ERAS (Enhanced Recovery After Surgery) introduced in Danish cancer surgery 2002-04
- Evaluation 2006 -> poor results
- 2009-11 National procure-specific guidelines published

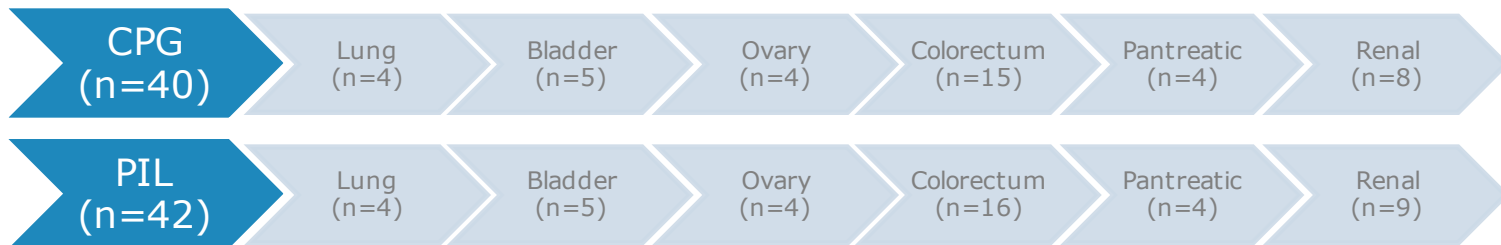
PILs (Patient Information Leaflet) improves patient satisfaction, shared-decision-making and overall outcomes

- Danish legislation support patient involvement in own treatment decisions



Data

Invitation send to 44 surgical departments in six cancer subspecialties



Method

The local Clinical Practice Guidelines (CPG): Assessed according to 9 specific ERAS variables

- Plans for
- 1) Discharge criteria
 - 2) ..mobilisation
 - 3) ..nutrition
 - 4) ..fluids
 - 5) ..pain management
 - 6) ..postoperative nausea and vomiting
 - 7) ..antibiotics
 - 8) ..bowel movement
 - 9) ..urinary drainage

The Patient Information Leaflets (PIL): Evaluated using DISCERN tool



Method

The DISCERN

Question What is investigated?
number

- 1 Are the aims clear?
 - 2 Does it achieve its aims?
 - 3 Is it relevant?
 - 4 Is it clear what sources of information were used to compile the publication (other than the author or producer)?
 - 5 Is it clear when the information used or reported in the publication was produced?
 - 6 Is it balanced and unbiased?
 - 7 Does it provide details of additional sources of support and information?
 - 8 Does it refer to areas of uncertainty?
 - 9 Question 9: Does it describe how each treatment works?
 - 10 Question 10: Does it describe the benefits of each treatment?
 - 11 Does it describe the risks of each treatment?
 - 12 Does it describe what would happen if no treatment is used?
 - 13 Does it describe how the treatment choices affect overall quality of life?
 - 14 Is it clear that there may be more than one possible treatment choice?
 - 15 Does it provide support for shared decision-making?
 - 16 Based on the answers to all of the above questions, rate the overall quality of the publication as a source of information about treatment choices?
-

DISCERN rating scale

5-point Likert scale

- (5) Yes – it's very clear
- (2–4) Partially – unclear/incomplete
- (1) No – not any indication

DISCERN questions

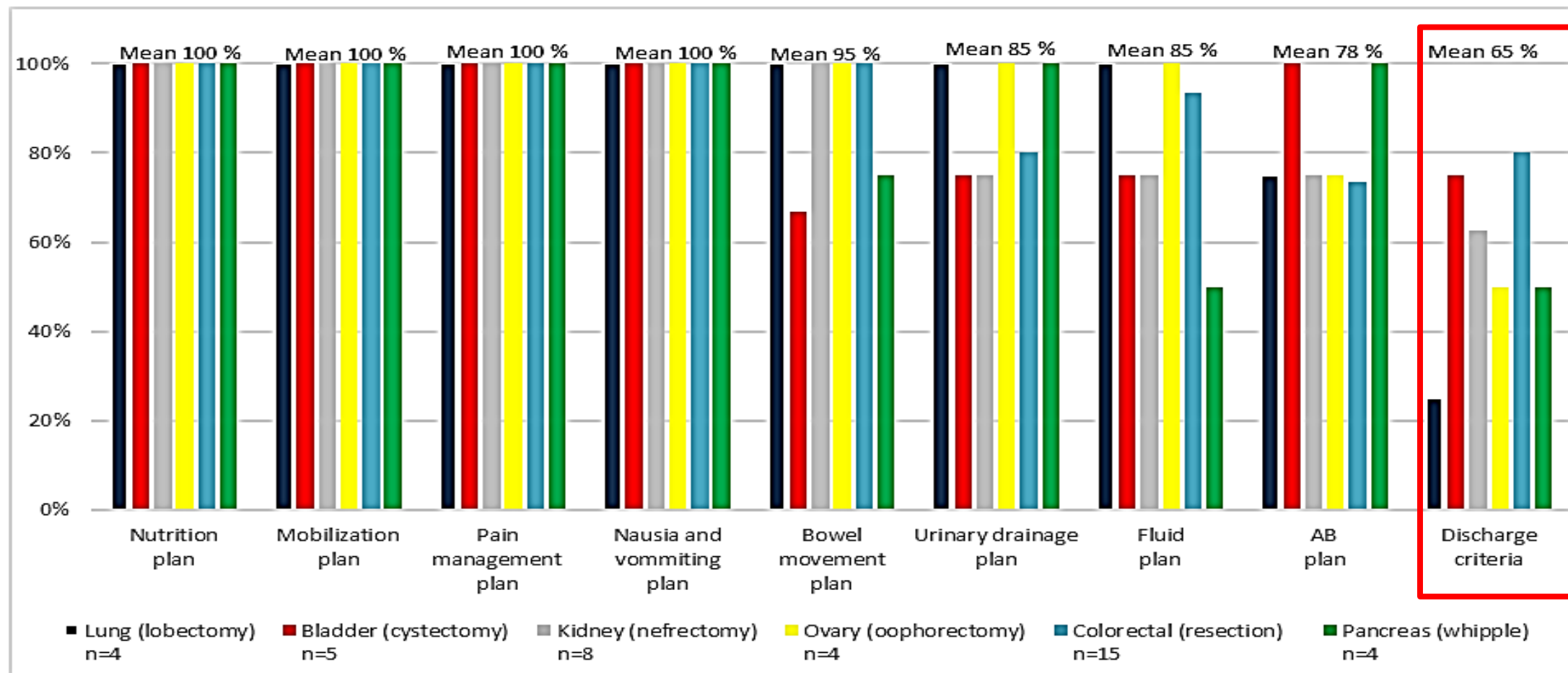
Questions 1-8: Reliability

Questions 9–15: Treatment

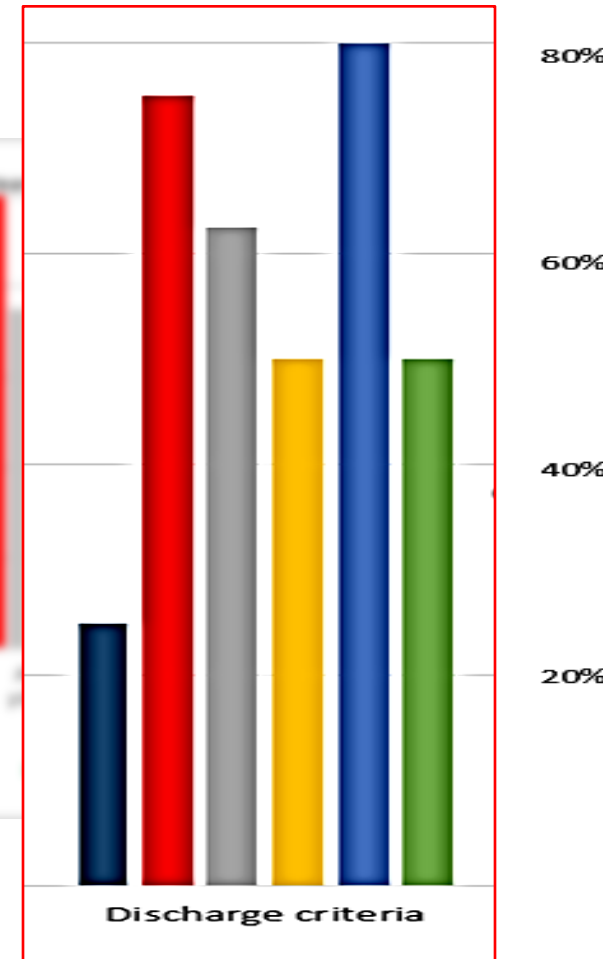
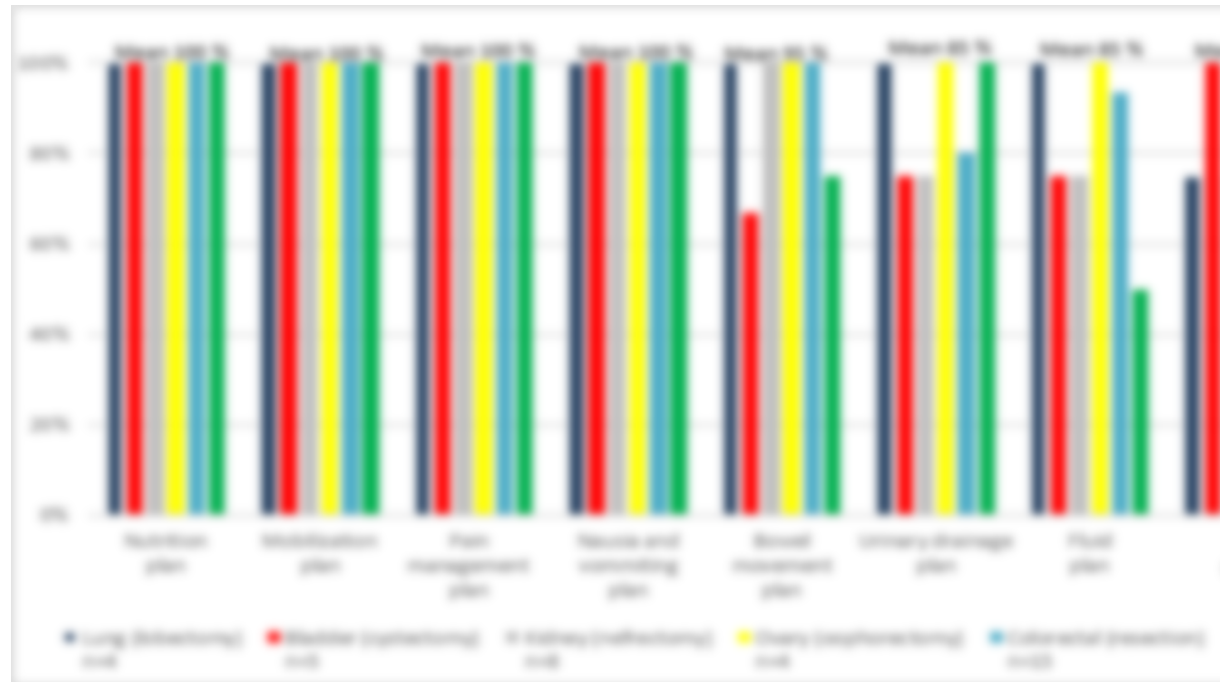
Question 16: Overall quality rating



Results – local CPGs

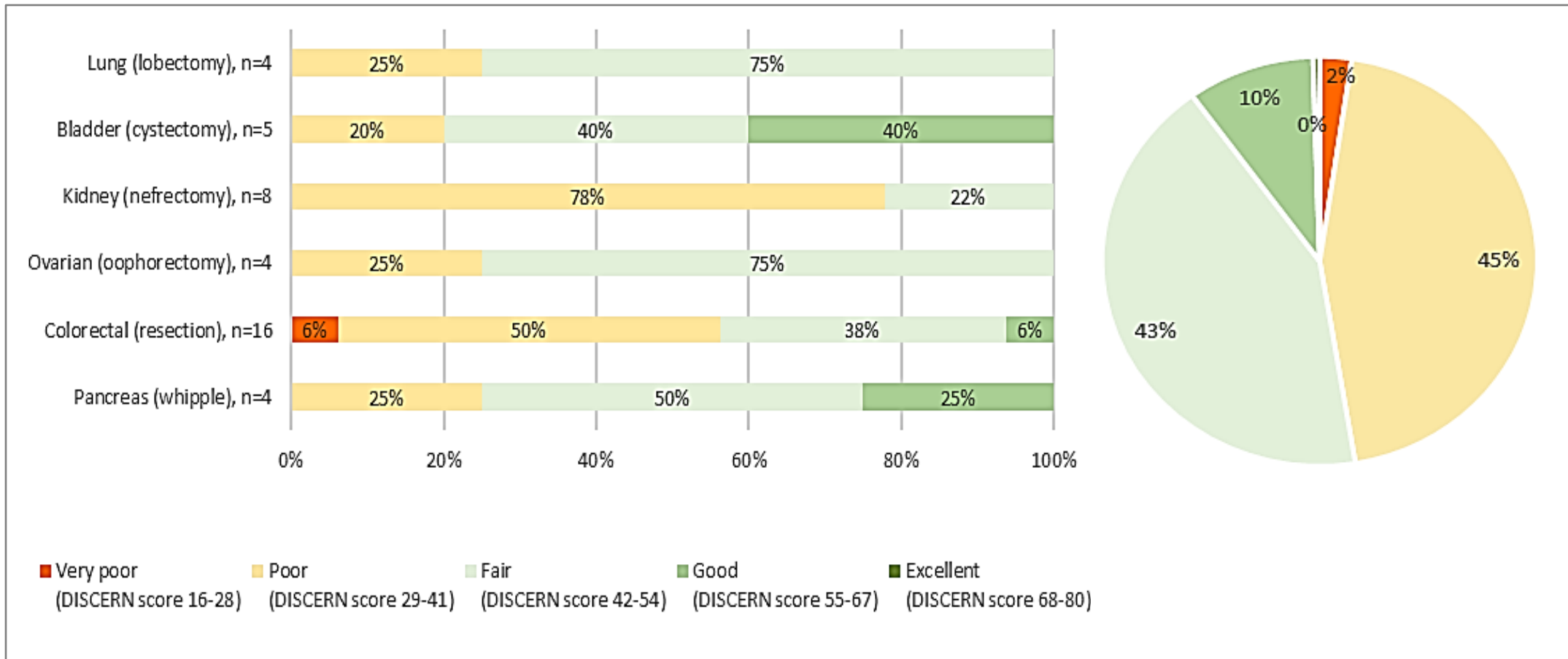


Results – local CPGs



Results - PIL

Quality of PILs (DISCERN score)



Results - PIL

Cancer		Lung (n=4)	Bladder (n=5)	Kidney (n=9)	Ovarian (n=4)	Colorectal (n=16)	Pancreas (n=4)	All
Criteria		Mean [range]	Mean [range]	Mean [range]	Mean [range]	Mean [range]	Mean [range]	Mean [range]
1	Aims clearly described	4.8 [4-5]	4.4 [2-5]	2.6 [1-5]	4.0 [1-5]	3.5 [1-5]	5.0 [5-5]	3.6 [1-5]
2	Aims achieved	3.8 [3-4]	4.4 [3-5]	3.1 [2-4]	3.8 [3-4]	3.7 [2-5]	4.0 [4-4]	3.6 [2-5]
3	Relevance	4.0 [4-4]	3.8 [3-4]	3.4 [3-4]	4.0 [4-4]	3.6 [2-5]	4.0 [4-4]	3.6 [2-5]
4	Sources of information	1.0 [1-1]	1.0 [1-1]	1.0 [1-1]	1.0 [1-1]	1.1 [1-1]	1.0 [1-1]	1.0 [1-1]
5	Date of publication	4.0 [1-5]	3.4 [1-5]	4.6 [4-5]	5.0 [5-5]	5.0 [1-5]	5.0 [5-5]	4.5 [1-5]
6	Balanced/unbiased	3.8 [3-4]	3.8 [3-4]	3.8 [3-4]	3.8 [3-4]	3.4 [2-4]	4.0 [4-4]	3.6 [2-4]
7	Support/other sources	1.0 [1-1]	1.4 [3-3]	1.0 [1-1]	1.5 [1-3]	1.3 [1-3]	1.5 [1-3]	1.2 [1-3]
8	Grey areas of treatment	1.0 [1-1]	2.2 [1-4]	1.0 [1-1]	1.0 [1-1]	1.4 [1-4]	1.5 [1-3]	1.3 [1-4]
9	Description of treatment	3.3 [2-4]	3.8 [2-5]	2.3 [1-4]	3.3 [2-4]	3.0 [1-4]	3.8 [2-5]	3.0 [2-5]
10	Benefits of treatment	1.5 [1-3]	3.4 [1-5]	2.7 [2-4]	2.3 [1-4]	2.8 [1-5]	2.5 [1-5]	2.6 [1-5]
11	Risks of treatment	2.8 [1-4]	4.0 [3-5]	3.1 [1-4]	3.8 [3-4]	3.7 [1-3]	3.0 [2-4]	3.4 [1-5]
12	Results of no-treatment	1.0 [1-1]	2.6 [1-5]	1.0 [1-1]	1.0 [1-1]	1.2 [1-3]	2.0 [1-5]	1.3 [1-3]
13	Quality of live	3.3 [3-4]	3.6 [3-4]	2.6 [2-4]	2.5 [2-3]	2.3 [1-3]	3.3 [3-4]	2.6 [1-4]
14	Alternatives described	1.0 [1-1]	3.2 [1-5]	1.0 [1-1]	1.3 [1-2]	1.9 [1-5]	2.0 [1-5]	1.7 [1-5]
15	Support shared-decision	3.0 [3-3]	3.8 [3-5]	2.3 [2-3]	3.0 [3-3]	3.1 [1-4]	3.3 [3-4]	3.0 [1-5]
16	Overall score	2.8 [2-3]	3.8 [2-5]	2.3 [2-3]	2.8 [2-3]	2.7 [2-4]	3.3 [3-4]	2.7 [2-5]
Total DISCERN score*		41.8 [36-46]	52.6 [31-67]	37.8 [32-42]	43.8 [37-48]	43.7 [26-63]	49.0 [41-62]	42.8 [26-67]
Score pr question**		2.6 [2.3-2.9]	3.3 [1.9-4.2]	2.4 [2.0-2.6]	2.7 [2.3-3.0]	2.7 [1.6-3.9]	3.1 [2.6-3.9]	2.7 [1.6-4.2]

* DISCERN score [min16; max 80] ** DISCERN score [min1; max 5]



Results - PIL

Sections	Very poor score 16-26 n (%)	Poor score 27-38 n (%)	Fair score 39-50 n (%)	Good score 51-62 n (%)	Excellent score 63-80 n (%)
1. Reliability ¹	1 (2%)	7 (17%)	29 (69%)	5 (12%)	-
2. Treatment options ²	2 (5%)	23 (55%)	12 (29%)	2 (5%)	3 (7%)
3. Overall quality ³	1 (2%)	16 (38%)	20 (48%)	3 (7%)	2 (12%)

1: Q 1-8 DISCERN score [min 8; max 40], 2: Q 9-15 DISCERN score [min 7; max 35], 3: Q 16 DISCERN score [min 1; max 5]



Conclusions - highlights

Most local CPG contained the 9 key elements for ERAS

- Discharge criteria need focus

The quality of the PILs were fair (43%) or poor (45%)

- Few PILs provided high-quality information,
- Source of information is never mentioned



Limitations

Local CPGs and written PILs reflects clinical practice?

- Implementation?
- Evaluation of the content of CPGs (valid tool)?

The DISCERN tool

- Readability?
- Requirements for health literacy?
- Effect in practice?
- Categories (cut-off values)



Patientinformation

Kræft i æggestokken

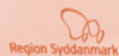
Om operationen - forberedelserne og tiden efter
samt anbefalinger til, hvordan du selv kan fremme et godt forløb



Ovariecancer

Gynækologisk Afsnit D6
Gynækologisk Obstetrisk Afdeling D

didan



Region Syddanmark

OUH
Odense
Universitetshospital

Thank you for the attention

