



Status on national dissemination of telemedicine

Peter Munch Jensen, Head of Department, ad interim

Agenda

- Why telemedicine?
- Telemedicine to citizens with COPD (Chronic Obstructive Pulmonary Disease) – status
- Telemedicine to citizens with heart failure – status
- Experiences and learnings

DIVISION OF LABOUR

Regional Level



5 regions

- Hospitals
- Psychiatric care
- General practitioners (family doctors)
- Adult dental care
- Other private practitioners

Local Level



98 municipalities

- Preventive care and health promotion
- Elder care
- Non-hospital rehabilitation
- Treatment of alcohol and drug abuse
- Child nursing

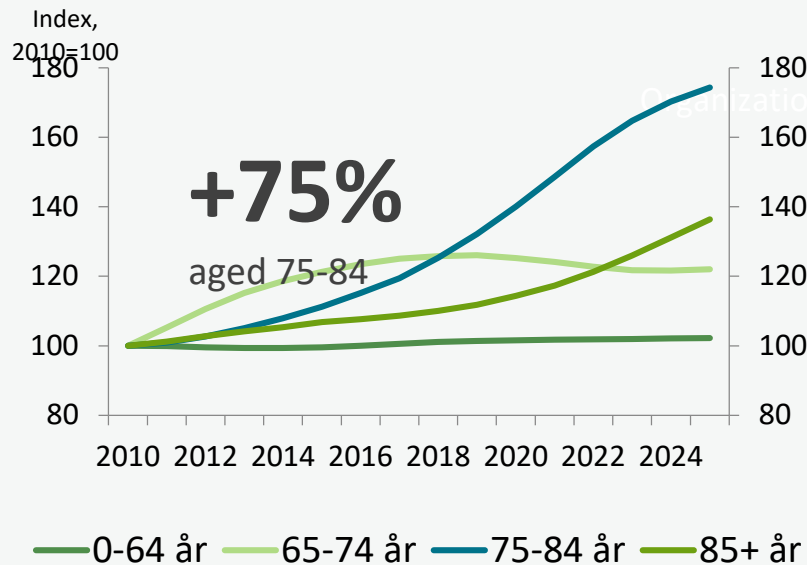
A CHANGE IN OUR DEMOGRAPHY

The population is getting older

In 2025 the number of citizens aged 0-64 will be the same as in 2010.

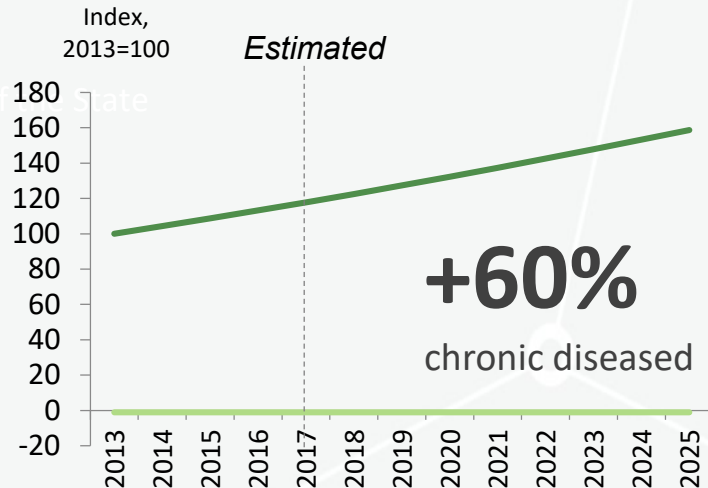
- but the number of citizens aged 75-84 will have increased by 75 percent.

→ Less tax payers and fewer health care workers



- and more people will suffer from chronic diseases

From 2013 to 2025 the number of citizens living with the most common chronic diseases is expected to increase by 60 pct.



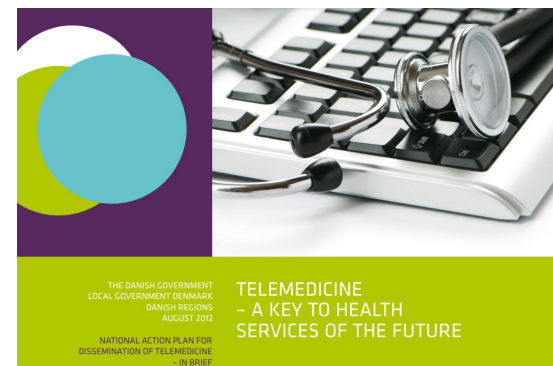
Home monitoring for COPD patients in the North Denmark Region (Telecare Nord)

- COPD patients often have many contacts with the health service and the municipal home care system
- Since 2012, COPD patients in Northern Jutland receive IT equipment in their homes to carry out daily or weekly health measurements
- Data is collected in a joint database that all relevant health professionals in hospitals, at the general practitioners and in the municipality have access to through their local IT systems
- It is the responsibility of the municipality to monitor the data

- Overall results:
 - Fewer hospitalizations and outpatient visits
 - Increased quality, flexibility and security



Home monitoring kit for citizens with COPD. Photo: TeleCare Nord



From large-scale to nationwide dissemination

- Agreement in 2016 between the government, municipalities and regions on national dissemination of telemedicine for COPD patients

TeleCare Nord as
starting point

Based on a joint
business case

The five regions and 98
municipalities are
responsible for the
implementation

National follow-up and
coordination

Based on the clinical
recommendations of the
Danish Health Authority
to citizens with COPD

Must be rolled out
before the end of 2019

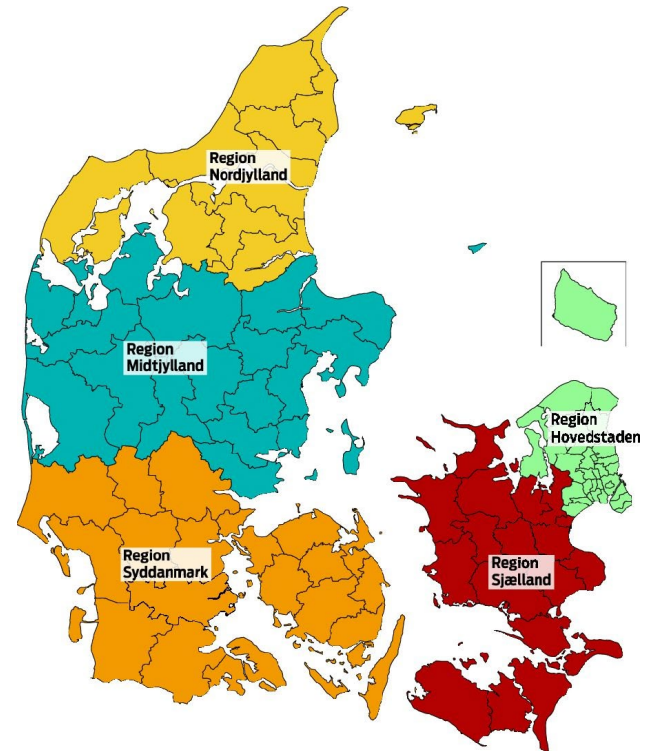
How do you ensure both national and local anchoring?

Five regional sub-programs

- The practical execution of disseminating telemedicine lies with the municipalities and regions organized into five regional programs
- Responsible for determining the content of the offer, tasks and division of responsibilities between municipalities and hospitals, educational activities, implementation efforts etc.

National portfolio steering committee

- Follows up on progress in the five regional sub programs
- Representatives from MoH, Local Government Denmark and Danish regions as well as representatives from each regional sub-program
- Supported by a joint portfolio secretariat



Status – progress of dissemination

➤ Latest progress monitoring from September 2020:

	Central	Zeeland	North	South	Capital
Commencement of pilot	January 2021 (August-September 2020)	November 2020 (October 2020)	January 2021 (September 2020)	February 2021 (August-September 2020)	January 2021 (November 2020)
10% inclusion	April 2021 (November 2020)	March 2021 (October 2020)	<i>Not relevant</i>	June 2021 (November 2020)	April 2021 (February 2021)
50% inclusion	November 2021 (May 2021)	October 2021 (April 2021)	<i>Not relevant</i>	December 2021 (March 2021)	February 2022 (December 2021)
95% inclusion	August 2022 (December 2021)	April 2022 (November 2021)	December 2021 (December 2020)	October 2022 (June 2021)	November 2022 (September 2022)

Telemedicine to citizens with heart failure

- It is agreed that telemedicine for citizens with heart failure must be spread out to the entire country
- Basically the same model as for COPD:
 - Positive results from large-scale testing in Telecare Nord
 - The Danish Health Authority has formulated clinical recommendations on telemedicine to citizens with heart failure
 - A national business case is being made
- Every nation sub-program must devise a plan for implementation of telemedicine to patients with heart failure

Experiences and learnings

- It takes a long time – from pilot to nationwide dissemination is close to 10 years for COPD
- It is not about IT – but...
- Local anchoring has created a sense of local ownership
- Involvement of clinical environments are vital
- COPD has hopefully paved the way...



SUNDHEDSDATA- STYRELSEN

Sundhedsdatastyrelsen
Ørestads Boulevard 5
2300 København S

T: +45 7221 6800

E: kontakt@sundhedsdata.dk

W: sundhedsdata.dk